

## General Specifications - MineMaster M845 Grader



### ENGINE

Model: Cummins QSB 6.7, Tier III Certified  
Horse power: Gross 150/173 hp @2200 rpm  
Type: 4-stroke, Turbocharged  
Cylinders: 6, in-line  
Fuel: Diesel (manual & Wiggins fill system)  
Cooling: Liquid

### POWER TRAIN

Rear Axle:  
Differential: Hydraulic Lock, Operator Controlled  
Tandems: Welded plate with 20 degrees oscillation each way

Front Axle:  
Heavy Duty Welded Steel  
8" ground clearance  
19 degree oscillation each way  
17.5 degrees wheel lean left/right

### BRAKES

Outboard planetary wet disc brakes  
Park/Emergency Brake: Spring applied/hydraulically released brake on output shaft of transmission

### HYDRAULICS

Closed center, load sensing  
Variable displacement pump  
9-Section control valve  
Front attachment piping  
Eight (8) Hydraulic diagnostic quick couplers  
Hydraulic driven cooling fan

### MAINFRAME

Heavy Duty all welded box

### DRAWBAR

"A" frame welded construction with center mounted circle turn motor  
Shim adjustable ball and circle

### CIRCLE

360 degree rotation  
Welded construction  
Hydraulic drive motor

### TRANSMISSION

Direct Drive Countershaft Power-shift transmission with electronic shift control and inching pedal  
Speeds: 5 forward, 2 speeds reverse  
Onboard diagnostics  
Automatic electronic control shifting  
Single lever bump style shifter  
Inching pedal

### INSTRUMENTATION/GUAGES

Engine oil pressure  
Engine coolant temperature  
Fuel level  
Transmission oil pressure  
Transmission oil temperature  
Brake oil pressure  
Battery charge  
Hourmeter  
Tachometer  
Parking brake applied  
Air and hydraulic oil filter restriction  
Speedometer  
Gear shift display

### TIRES

10.00 x 20 (7.5" 1 piece rim)  
Foam filled tires  
Low profile design

### MOLDBOARD

Hydraulic moldboard side shift and pitch  
Moldboard float control  
Saddle with 5 positions  
High carbon steel  
Involute curve shape  
Length: 10' - 14'  
Height: 22"  
12 x .875" Thick moldboard  
Ground penetration: 15" (max)  
Above Ground Lift: 13.5" (max)  
Cutting Angle: 90 degrees (max)

### STEERING

Hydrostatic power steering

### ARTICULATION

Hydraulic actuated (with lock valve)  
Range: 25 degrees left or right  
Hydraulic controls

### ELECTRICAL

Voltage: 24  
Headlights: 2  
2 mounted rear flood lights  
Moldboard work lights: 4  
Backup alarm  
Alternator: 80 amps  
Batteries: 2, low maintenance  
Beacon lights (2)

### OPERATOR'S COMPARTMENT

Adjustable operator's console  
Adjustable suspension seat  
Retractable seat belt  
Walk-through operator compartment  
Steps-both left and right side  
Horn

### MINING PACKAGE

Beacon lights (1) front & (1) back  
Fire suppression system  
37 point Auto Lube system  
Air pre-cleaner  
HD Rear guard  
HD fuel tank  
Rear towing lugs  
6 pole Master switch  
Front guard  
Wheel chocks  
Wiggins fast fill fuel system  
Ceramic exhaust coating  
Folding steps

**Tracks & Wheels builds the MineMaster product in several standard configurations to suit a variety of applications, we also design and build custom units to our customers unique needs for specialized applications. Contact us for complete specifications and general arrangement drawings of the Mine Master you require.**



**TRACKS & WHEELS**  
Equipment Brokers Inc.  
Registered ISO 9001:2000



#### SUDBURY

400 69 N. Box 2592  
Sudbury, ON P3A 4S9  
Tel: (705) 566-5438  
Fax: (705) 566-5422

#### TIMMINS

2200 Riverside Dr. RR2  
Timmins, ON P4N 7C3  
Tel: (705) 268-5438  
Fax: (705) 268-3382

#### NORTH BAY

701 Graham Drive  
North Bay, ON P1B 9E6  
Tel: (705) 840-5438  
Fax: (705) 474-0417

#### SAULT STE MARIE

232 Drive-In Road  
Sault Ste Marie, ON P6B 6A9  
Tel: (705) 256-5438  
Fax: (705) 256-1451

#### THOMPSON MB

35 Station Rd  
Thompson, MB R8N 0N6  
Tel: (204) 778-3777  
Fax: (204) 778-4477

WEBSITE: [www.tracksandwheels.com](http://www.tracksandwheels.com)

EMAIL: [sudbury@tracksandwheels.com](mailto:sudbury@tracksandwheels.com)

**"Our Service Makes the Difference"**

**MINEMASTER M845 Grader**



**WHEN IT COMES TO MINE  
MAINTENANCE VEHICLES  
NOTHING BEATS A MINEMASTER!**



MineMaster M845  
Low Profile Underground Grader



**TRACKS & WHEELS**  
Equipment Brokers Inc.  
Registered ISO 9001:2000

# MineMaster M845 Grader Series

# FEATURES

The MineMaster M845 Underground Grader was uniquely designed for underground ramp maintenance. This unit offers a sleek low profile design with front frame and rear hood sloping away from the operator allowing a clear, unobstructed view in all directions. In addition the M845 boasts an overall height of just 94" and a full 8" of ground clearance! The articulated frame and low-effort control levers allow the operator to easily maneuver up and down ramps, turn corners and work efficiently in tight working conditions.



MineMaster  
Mine  
Maintenance  
Vehicles

### Our strong points include:

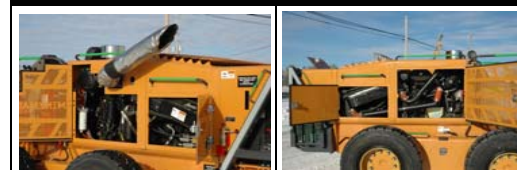
- Tier III certified engine
- Excellent visibility all around
- Tightest turning radius in the industry
- Heavy duty front & rear guards
- Auto lube system
- Upgraded electrical compartment
- Heavy duty fuel tank
- Wiggins fast fill fuel system
- Fire suppression system
- Ergonomically designed operator compartment to minimize operator stress
- Protective operator guards
- High ground clearance
- Outstanding fuel efficiency, low emissions
- Accumulator blade protection & Internal circle gear

### Options & Attachments include

- ROPS
- Front scarifier with 5-11 teeth
- Front blade
- Moldboard from 10'-14'



### ENGINE



The M845 Grader features a Tier III certified, turbo charged, Cummins QSB 6.7, 6 cylinder diesel engine. Swing out side panels allow for easy access to engine compartments and daily check points.

The MineMaster M845 Grader is powered by a turbocharged Cummins 6 cylinder dual horsepower 150/173 diesel engine, with operating speeds up to 14 kmph. The heavy duty construction and rugged A-frame design provide the strength to handle the extreme conditions of the underground environment.

This unit features a heavy duty articulated frame, which is articulated ahead of the operator compartment giving the MineMaster M845 Grader the tightest turning radius in the industry.

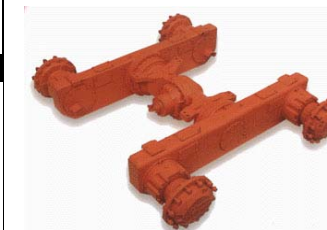


### ELECTRICAL COMPARTMENT



Electrical components are enclosed in a waterproof stainless steel compartment.

### REAR AXLE



Rear axle is tandem drive. Each tandem assembly oscillates and pivots on a tandem hub bushing. Differential hydraulic lock is operator controlled. Outboard wet disc brakes on each wheel.

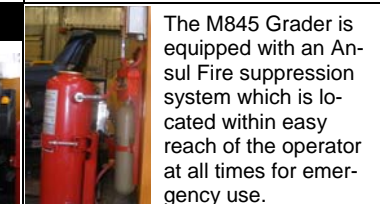
### FRONT AXLE



Front axle is built with high strength welded steel for strength and durability. With an oscillation of 19° in each direction and a wheel lean of 17.5° to the left or right for maximum traction and moldboard control.

### SEAT

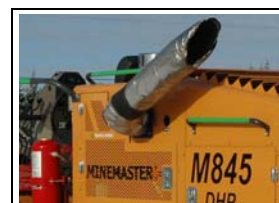
The grader is equipped with an air-ride, fully adjustable suspension seat complete with two arm rests, lumbar support and a retractable seat belt with a 10° tilt forward or backward.



### INSTRUMENT PANEL



Operator's compartment features include a tilting steering column and wheel for maximum comfort. Industry standard control patterns, large easy to read gauges, and all controls are within easy reach of the operator to minimize operator stress and strain. Walk-through operator compartment can be accessed from either side.



### EXHAUST

The exhaust system on the M845 Grader is equipped with a purifier muffler and utilizes ceramic coating and Firwin wrapped for hot surface protection. The added deflector directs the exhaust to the rear of the machine to minimize dust.



### LUBRICATION

The M845 Grader features a 37 point in-line auto lube system. Greasing is completed in one step by refilling the grease reservoir.



### REAR COMPARTMENT

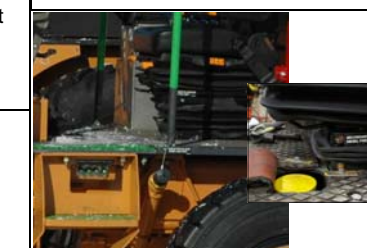
The Batteries, hydraulic tank and master switch are located in the rear compartment for easy access.

### 3-Point Contact

3-point contact on all entry/exit ways. All walkways are grated and/or treated with anti-slip compounds. Clear, unobstructed hand holds, foot holds and walkways.

### FUEL TANK

The fuel tank on the M845 is heavy duty construction with a high fuel capacity for extended operating between refueling.



### EASY FILL POINTS

Fill and check points are easy reach from ground level. All caps are painted and labeled for easy identification.

### OPERATOR'S COMPARTMENT



Our excellence in quality is achieved through the commitment of our highly skilled staff combined with the selection and continual updating of the equipment, materials, processes, and manufacturing methods.